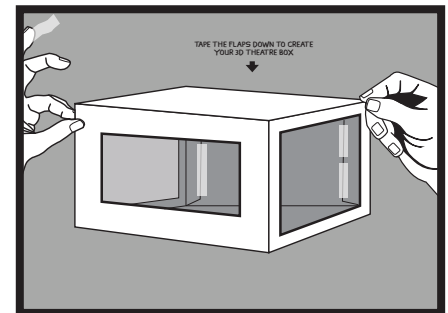
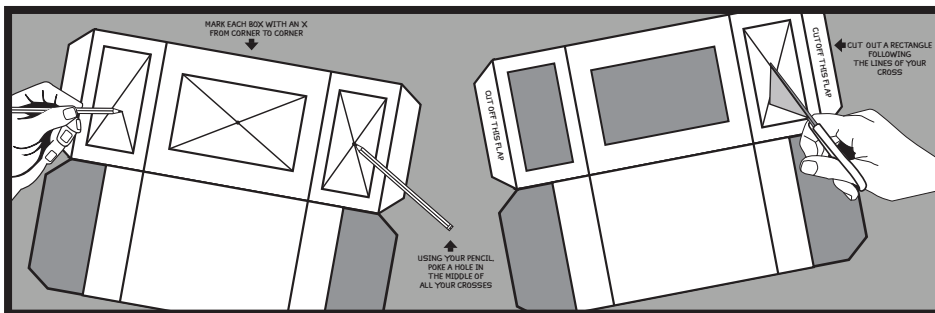
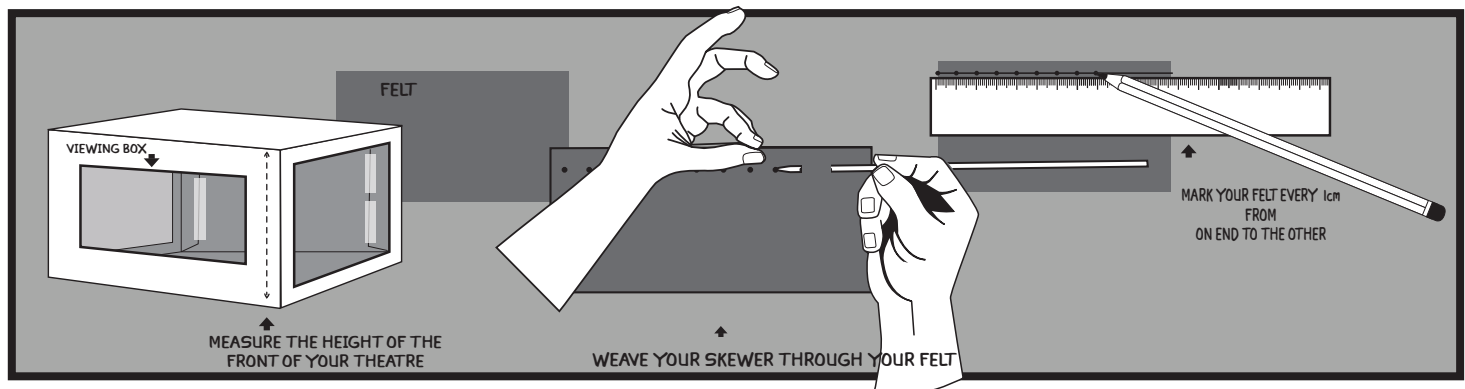


INSTRUCTIONS

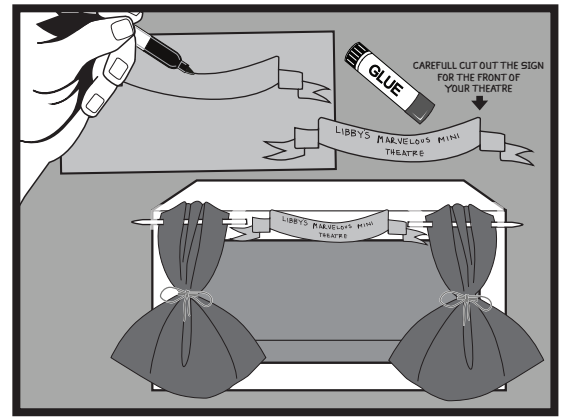
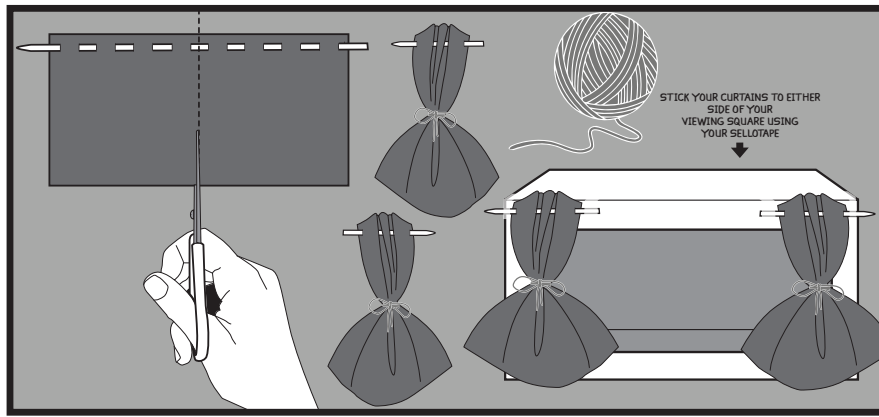


To make the frame of the theatre, you need to draw three squares. One on the mainside of the box (leaving about a 4cm frame around the sides) and one on each flap (leaving about a 2cm frame around the sides). Put a pencil through the centre of the x to pierce a hole, when you have done this, you should be able to cut around the shape of the square more easily. Cut off the 4 small flaps on the sides.

To tape the sides of your theatre, fold the flaps back in to your square to create a box. Tape around the sides



Curtains: Take a piece of felt that has been provided in your art kit and cut it to the height of your viewing box (the main cut out square of your theatre.) Then using the sharp end of a skewer stick or scissors cut a hole every 1cm in a horizontal line in the top of your piece of curtain. The line of holes that you are creating should be about 0.5 cms away from the edge of the top of your felt. When you have created all the holes get a skewer and weave the fabric through. Your felt should start to get a series of folds in it.

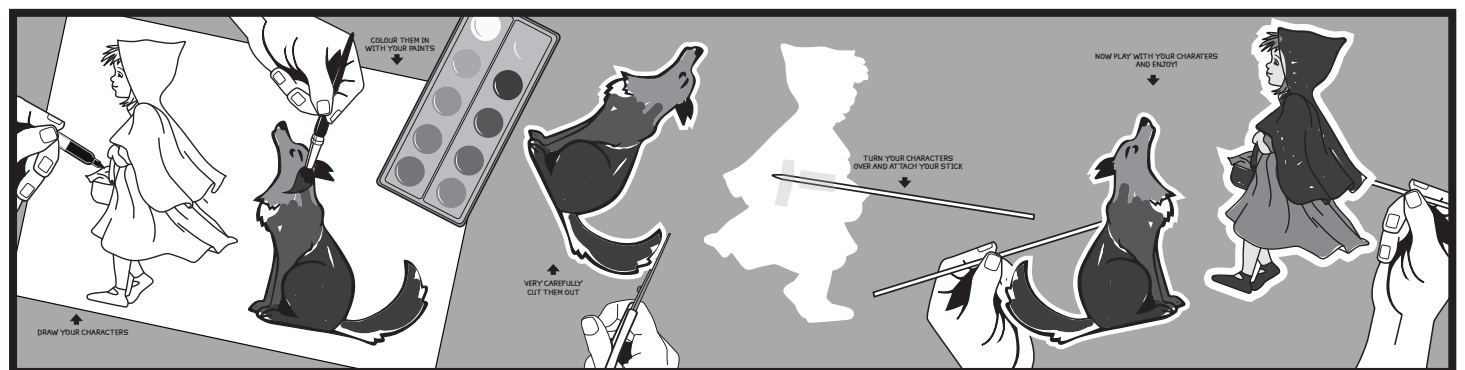


Cut the fabric at the halfway length. Gather the fabric on one side (it should be folded like a fan) and cut a piece of wool (approximately 30 cm in length.) Take the wool and wrap it around the folded fabric halfway down. Tie a knot and finish with a bow. Repeat on the other side. Take your curtains on your skewer and stick with sellotape to the top of your frame. The skewers are slightly too long for the box so just snap the ends off.

Draw a sign to go at the top of your theatre. Have a think about what name you want to give your theatre. It can be any shape or colour, and should fit at the top of your theatre in between the curtains. Stick on with tape or glue.



Take a piece of A5 paper and draw the background to your story onto it. Have a think about the world of your story. Does your story take place in the city or the countryside? Is it in a house or in a wood? Think of where you want your characters to play and draw this onto your paper and colour in. Slide this piece of paper into the back of your theatre.



To make your characters on a stick, think about who the characters are in your play? Draw out and paint them on a piece of cardboard. They need to be small enough to fit in your theatre. Cut them out and attach a skewer to the back of them. This will allow you to move the characters around your set. Now you have all the elements for your play! Have fun.

ART KIT

Why not try ...

AN UNDERWATER PLAY...

Materials you will need:
You will need glue, A5 paper (white and coloured), scissors, felt, a recycled flattened cardboard box, wool, paints, paint brush, a pencil, pen, sellotape and a kebab stick.

1. Start looking through your recycling and finding a box that you think would be great for making your theatre. Then make it the same way as you did before.

2. Then make your curtains and sign. Think about what you want to name it.

3. Draw and paint your sea scape, do anything you like be free and have lots of fun!

4. Draw, paint and cut out your characters. Attach your kebab stick to the back as you did before.

THE GREAT UNDERWATER ADVENTURE

AN OUT OF SPACE ODYSSEY...

WHAT YOU NEED TO MAKE YOUR SPACE ODYSSEY

Materials you will need:
You will need glue, A5 paper (white and coloured), scissors, felt, a recycled flattened cardboard box, wool, paints, paint brush, a pencil, pen, sellotape and a kebab stick.

1. Start looking through your recycling and finding a box that you think would be great for making your theatre. Then make it the same way as you did before.

2. Then make your curtains and sign. Think about what you want to name it.

3. Draw and paint your space scape, do anything you like be free and have lots of fun!

4. Draw, paint and cut out your characters. Attach your kebab stick to the back as you did before.

WHAT IS OUT THERE? SPACE ADVENTURE

Brilliant well done!!
Now think of another theme for your next theatre!

AN ENCHANTED FOREST...

WHAT YOU NEED TO MAKE AN ENCHANTED FOREST

Materials you will need:
You will need glue, A5 paper (white and coloured), scissors, felt, a recycled flattened cardboard box, wool, paints, paint brush, a pencil, pen, sellotape and a kebab stick.

1. Start looking through your recycling and finding a box that you think would be great for making your theatre. Then make it the same way as you did before.

2. Then make your curtains and sign. Think about what you want to name it.

3. Draw and paint your enchanted forest, do anything you like be free and have lots of fun!

4. Draw, paint and cut out your characters. Attach your kebab stick to the back as you did before.

MY MAGICAL FOREST

Well done!!
Enjoy!

ART KIT

Teacher's Skills:

What skills will they have learnt from this workshop?

This section is to highlight the importance of creative processes to the parents and carers.

This workshop is great for the imagination and creativity - the child will be inventing their own world within their box.

There are also some craft techniques which will improve motor skills and focuses on drawing and painting and cutting.

Create and Play!

When you have created your theatre you can put on plays and invent stories for your characters.

You can make different backdrops for the theatre set, and make different characters for each play.

You can add extra details to your set by recreating pieces of scenery.

You can make special invitations to invite your family to watch your play.

Share on
FACEBOOK!
Share your awesome artwork
on our facebook gallery
@studiomerakibristol
and see what others
have been
up to!

HELPFUL LINKS :

Go to or website

www.studiomeraki.org

- Full project video of Libby making her mini theatre

Have a look...

littleangeltheatre.com

They have lots of games and makes and stories!